



Video Scaler (Up Converter)

Model SC-1250

SC-1250 is a high-performance, low-cost Video Scaler to transform Composite, S-Video or Component Video (YCbCr) into standard RGBHV computer signals at VGA, SVGA, XGA or SXGA resolutions. It also has HDTV 16:9 YPbPr outputs at 480p, 576p, 720p or 1080i. It is ideally suited for use with LCD Projectors, CRT Monitors, Projection TV Systems, Plasma or HDTV Displays to improve picture quality. The output resolution is selectable between the most popular PC and HDTV formats. Adjustments are provided for Color Saturation, Hue, Brightness, Contrast and Sharpness. There is also an HD-15 pass-thru for a computer or HDTV signal.

In addition to the local control provided by front panel buttons, two methods of remote control are offered. An Infrared Remote Control is standard. The RS-232 interface allows control by a wide variety of third party control systems or from a PC with the Windows Control Panel software provided. An OSD (On Screen Display) facilitates Menu navigation for setup and selection.

An Adaptive Film Mode with an automatic 3:2 pull-down detector that provides clear and crisp de-interlacing video from 24 fps film. It offers significant enhancements when viewing movies on a large screen. Smooth de-interlacing and video motion compensation is included. The unit automatically detects a variety of NTSC and PAL standards. Choose a Desktop or Rackmount case.

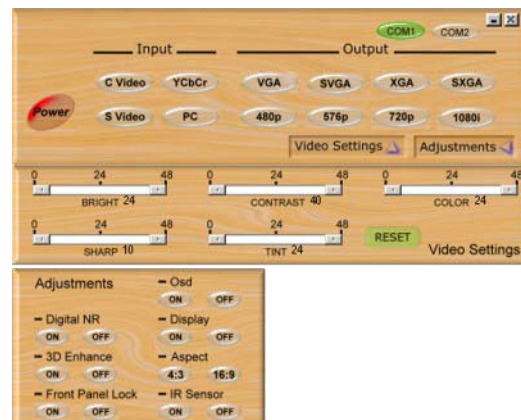


SC-1250



Rear View

Windows Control Panel



Key Features of the SC-1250

- Component, Composite, S-Video Inputs
- PC/HDTV (RGBHV/YPbPr) Input for Bypass
- Input Video Adjustments
- Automatic Input TV Standards Detection
- NTSC, PAL Operation
- PC Resolutions up to 1280x1024
- All Standard HDTV Resolution
- Output Signal on HD-15
- RS-232 Interface and IR Remote Control
- Desktop or Rackmount Cases

Output Resolutions and Signal Formats

Scaled Output - PC Resolutions		Vert Refresh Rate	Horiz Scan Rate	Composition	Scan
VGA	640x480	60 Hz	31.25 to 43.27 KHz	RGBHV	Progressive
SVGA	800x600	60 Hz	37.88 to 53.66 KHz	RGBHV	Progressive
XGA	1024x768	60 Hz	48.36 to 60.03 KHz	RGBHV	Progressive
SXGA	1280x1024	60 Hz	63.98 KHz	RGBHV	Progressive
Scaled Output - HD Resolutions		Vert Refresh Rate	Horiz Scan Rate	Composition	Scan
480p	852x480	60 Hz	31.47 KHz	YPbPr	Progressive
576p	852x576	60 Hz	37.62 KHz	YPbPr	Progressive
720p	1280x720	60 Hz	44.85 KHz	YPbPr	Progressive
1080i	1920x1080	60 Hz	33.64 KHz	YPbPr	Interlaced



Video Scaler (Up Converter)

Models SC-1250

Specifications

Scaled Output

Connector 1x via HD-15 Female Connector

Video Inputs

Composite Video 1x via BNC Connector
 S-Video (Y/C) 1x via 4-PIN Mini-DIN Connector
 Component (YCbCr) 1x via 3 BNC Connectors
 PC/HDTV Loop-thru 1x via HD-15 Female Connector
 Television Standards NTSC , PAL-B/G/I/D
 Impedance 75Ω

Processing Amplifier

Video Adjustments Contrast, Brightness, Hue (NTSC), Color Saturation and Sharpness Non-Volatile for each Input

Settings Memory

Control Methods

Local Front Panel via Push Buttons and OSD
RS-232 Interface via DB-9 Male

Mechanical

SC-1250 (HWD) 1.75"x11.5"x7" (44x292x178mm)
 Weight (Net) 3.5lbs (1.6kg)
 SC-1250-R 1.75"x19"x7" (44x482x178mm)
 Weight (Net) 2.4lbs (1.1kg)

Warranty

Limited Warranty 2 Years Parts and Labor

Environmental

Operating Temperature +32° to +120° F (0° to +48° C)
 Operating Humidity 10% to 85%, Non-condensing
 Storage Temperature -40° to +150° F (-40° to +65° C)
 Storage Humidity 10% to 85%, Non-condensing

Power Requirement

Internal Power Supply 100-240VAC @ 50-60Hz

Regulatory Approvals

Video Scaler Unit FCC, CE
Power Supply UL, CE, CSA

Accessories Included

1x C-Video Input Cable 6' BNC to BNC
 1x S-Video Input Cable 6' 4-Pin Mini-DIN
 1x VGA Output Cable 6' HD-15 Male to Male (Note 1)
 1x YPbPr Output Cable 6' HD-15 to 3-BNC (Note 1)
 1x Operations Manual SC-1250
 4x Rackmount Screws SC-1250-R
 1x Software Disk Windows Control Panel

Product Item Numbers

SC-1250 Desktop Version
SC-1250-R Rackmount Version (Note 2)

Notes

- (1) Cable assemblies of alternate lengths are available.
- (2) Changeable Front Panel is the only difference.

Panel Drawings

